



# AXS COMPONENT COMPATIBILITY

## ELECTRONIC COMPATIBILITY

Choose your Master Component(s), optional System Component(s), and the System Controller(s) for a customized bicycle experience.

### MASTER COMPONENT



ROAD REAR DERAILLEUR

RD-RED-E-D1
RD-FRC-E-D1
RD-RIV-E-D1
RD-RED1-E-D1
RD-FRC1-E-D1
RD-RIV1-E-D1

MTB REAR DERAILLEUR

RD-XX-1E-A1
RD-X0-1E-A1
RD-GX-1E-A1



SEATPOST

SP-RVB-AXS-A1
SP-RVB-XPLR-A1



FRONT SUSPENSION

FS-PIKE-UFA-C1
FS-LYRK-UFA-D1
FS-ZEB-UFA-A2

The Master Component must be:

- Rear Derailleur in a system without Flight Attendant
- Seatpost in a Reverb™ only AXS system
- Front Suspension in a Flight Attendant system

Flight Attendant requires the use of a Flight Attendant Crankset/Pedal sensor.

### SYSTEM COMPONENT



ROAD FRONT DERAILLEUR

FD-RED-E-D1
FD-FRC-E-D1
FD-RIV-E-D1
FD-FRC-EW-D1
FD-RIV-EW-D1



SEATPOST

SP-RVB-AXS-A1
SP-RVB-XPLR-A1



CRANKSET/PEDAL SENSOR

FC-X0-1FA-C3
FC-XX-1FA-C3
EP-EAC-FAPS-A1



REAR SHOCK

RS-SDLX-UFA-C1
----------------

The Road Front Derailleur can only be used with a Road Rear Derailleur.

### SYSTEM CONTROLLERS

#### FLAT HANDLEBAR



LEFT CONTROLLER

EC-AXS-RKSX-A1
EC-AXS-ROCK-A1



RIGHT CONTROLLER

EC-AXS-SRAM-A1
EC-GX-AXS-A1

Compatible with MatchMaker™ X.

#### DROP HANDLEBAR



LEFT CONTROLLER

EB-RED-D1
EB-FRC-D1
ED-RED-D1
ED-FRC-D1
ED-RIV-D1



RIGHT CONTROLLER

EB-RED-D1
EB-FRC-D1
ED-RED-D1
ED-FRC-D1
ED-RIV-D1

The System Controller:

- Is optional for Flight Attendant. For full AXS builds with a rear derailleur and seatpost, a double button Left Controller is needed for Flight Attendant control.
- For drop handlebars, the accessory shift buttons are optional for RED and Force.
- At least one pair of shift buttons must be used with the BlipBox.

#### AEROBAR EXTENSIONS



LEFT EXTENSION

EC-AXS-ZIPP-A1
----------------

RIGHT EXTENSION

EC-AXS-ZIPP-A1
----------------

One pair of Clics™ and one pair of MultiClics™ are included with the VukaShift™ AXS 90.

#### AERO HANDLEBAR



BLIPBOX™

ES-EAC-BBOX-D1
----------------

#### ACCESSORIES

CHOOSE YOUR ACCESSORY SHIFT BUTTON(S) TO WORK WITH YOUR CONTROLLER.

BUTTONS

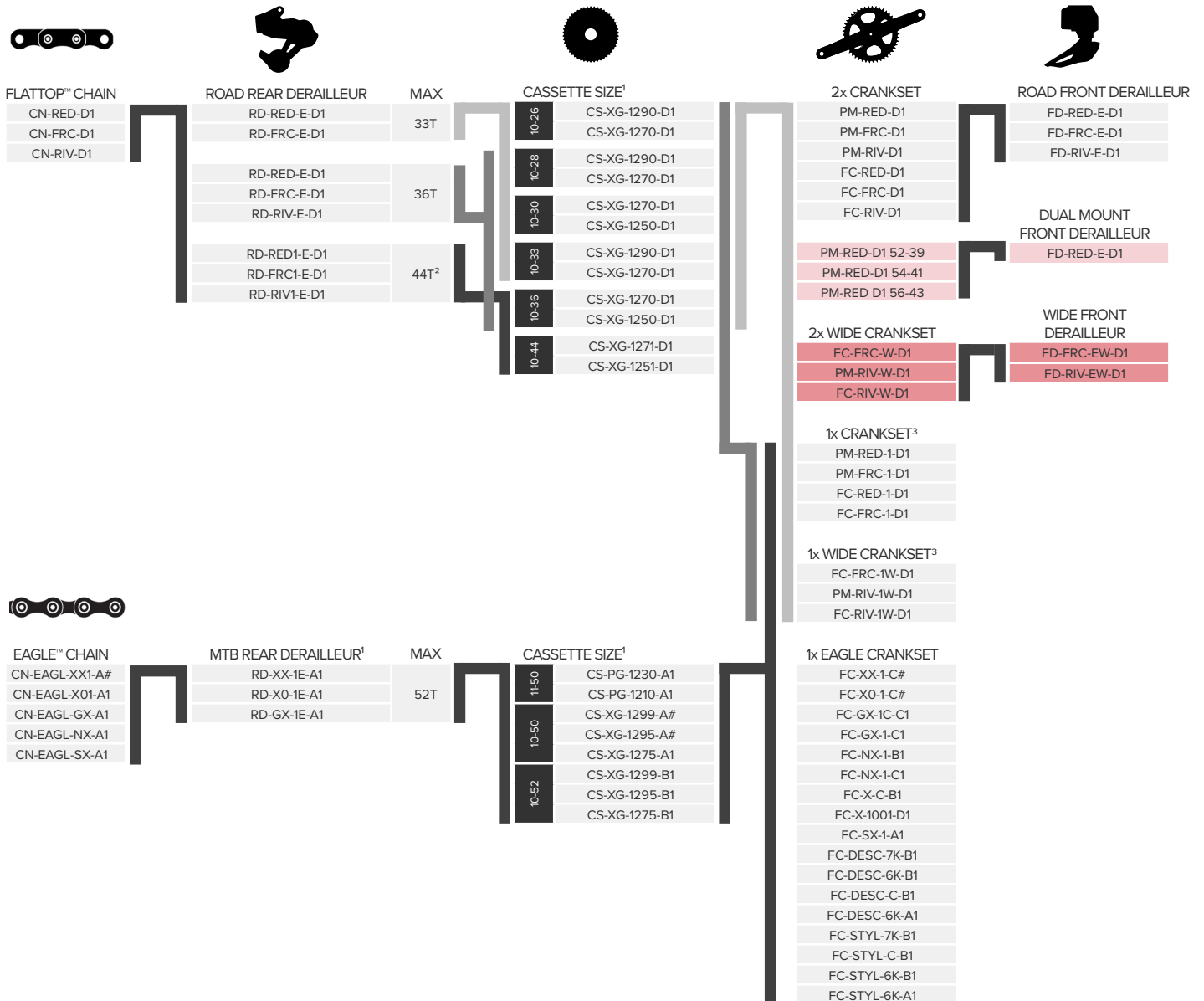
ES-EAC-MCLC-A1
ES-EAC-CLIC-A1
ES-EAC-BLIP-A1

SEE NEXT PAGE FOR MECHANICAL COMPATIBILITY

# MECHANICAL COMPATIBILITY

The frame must comply with the *Frame Fit Specifications* for the components used. Visit [sram.com/service](http://sram.com/service) for Frame Fit Specifications.

## CHAIN, DERAILLEUR, CASSETTE, AND CRANKSET/CHAINRING COMPATIBILITY



- All Eagle chains, cassettes, and cranksets/chainrings are compatible with an Eagle AXS rear derailleur.
- 44T MAX road rear derailleurs are compatible with specified road 1x cranksets only.
- When combining road and MTB on a 142 mm OLD frame, you must verify the frame fit dimensions work with the Eagle cassette and rear derailleur specifications. The road 1x wide crankset is preferred for use with an Eagle cassette on a 142 mm OLD frame. Visit [sram.com/service](http://sram.com/service) for the Frame Fit Specifications.

# = Numeral may vary.